

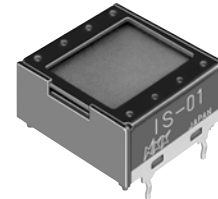
Change Notice

Change to Connectors of SmartSwitch LCD 36 x 24 Displays

Type of Change:

- Engineering Part Number
 Product Appearance

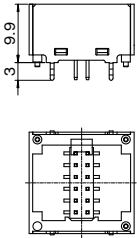
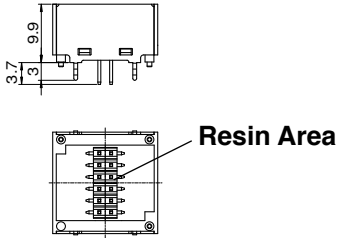
IS01 Series LCD 36 x 24 Displays will have a change to the connector.



IS01 LCD 36 x 24 Display

This change will affect the following products:

All IS01 Series LCD 36 x 24 Displays, including custom products

Connector in the Terminal Area		
	Before Change	After Change
Outer Dimension		
Resin Material	PPS (color: light brown)	Denaturated Polyamid 6T (color: black)

Availability

Change will be effective with September 2010 production.